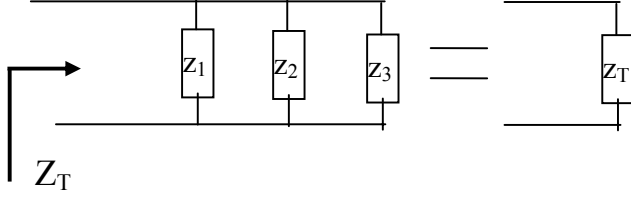


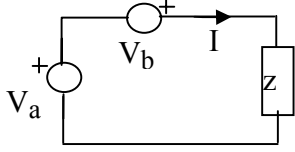
Kompleks Analiz Odev 9.b

1) Paralel bağı empedansların eşdeğerini hesaplayın.

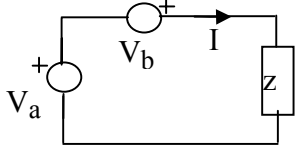


$$z_1=A+Bj, \quad z_2=C+Dj, \quad z_3=E+Fj,$$

2) Aşağıdaki devrede I akımını hesaplayın. $V_a=G \cos(75t+30)$, $V_b=H \sin(75t)$, $Z=K+Lj$ (Not frekanslar aynı, fazörler toplanabilir.)



3) Aşağıdaki devrede I akımını hesaplayın. $V_a=G \cos(50t+30)$, $V_b=H \sin(75t)$, $Z=K+Lj$ (Not frekanslar farklı, fazörler toplanamaz)



No	A	B	C	D	E	F	G	H	K	L
999	4	1	2	4	1	5	50	30	5	4
21110011013	3	2	4	3	4	2	20	40	4	3
21110011073	4	3	4	5	4	5	20	20	2	1
22110011009	4	3	4	3	4	2	30	30	2	5
22110011012	2	1	2	5	4	5	30	40	2	2
22110011015	2	5	5	2	3	2	30	30	5	1
22110011031	4	5	2	5	3	5	20	20	2	3
22110011044	5	1	1	3	4	3	30	50	2	5
22110011048	5	4	5	5	3	4	30	30	3	3
22110011050	3	5	4	5	3	5	20	40	5	4
22110011301	3	2	4	4	5	2	40	10	3	3

22110011303	5	5	1	2	4	4	20	20	4	3
22110011361	1	3	3	1	3	2	10	20	2	2
22110011363	5	2	2	3	5	2	50	50	4	5
22110011366	1	3	2	5	3	4	20	40	5	5
23110011003	4	3	2	3	1	3	50	30	5	3
23110011006	5	2	3	5	4	4	40	40	2	4
23110011014	1	5	4	3	3	5	20	10	2	4
23110011032	5	4	2	5	2	4	30	40	5	3
23110011034	4	2	4	3	4	1	50	10	5	4
23110011035	1	3	3	4	3	3	40	30	4	2
23110011038	5	3	3	2	5	5	40	40	4	2
23110011039	3	2	2	2	5	5	50	30	2	2
23110011042	5	4	2	4	1	3	50	50	5	5
23110011051	1	4	5	4	3	5	50	50	5	3
23110011312	4	5	3	3	3	5	40	20	2	2
23110011803	3	2	2	1	3	3	20	10	2	3
23110011804	1	5	1	3	2	3	20	30	1	4
24110011002	5	2	4	3	5	3	20	20	2	3
24110011003	2	2	3	5	2	1	40	40	4	1
24110011006	4	5	2	3	4	2	40	50	2	3
24110011009	5	2	4	3	3	2	30	40	2	3
24110011010	2	3	2	5	1	3	20	40	2	4
24110011012	4	2	4	1	2	2	20	40	4	1
24110011014	1	4	5	2	4	2	20	20	2	2
24110011015	2	2	2	4	3	2	50	50	5	3
24110011016	2	3	5	3	3	2	40	30	2	5
24110011019	2	2	4	5	5	2	30	40	5	4
24110011020	1	5	2	4	2	2	20	10	5	2
24110011021	2	2	2	2	3	3	40	40	3	4
24110011022	3	3	2	4	3	3	40	50	2	5
24110011025	5	3	5	3	5	4	40	40	5	5
24110011026	5	5	2	1	4	4	30	20	3	2
24110011311	3	3	3	1	2	4	50	50	3	4
24110011506	1	3	5	4	3	2	50	50	4	5
24110011519	2	5	3	5	2	1	50	30	5	3
24110011520	4	3	5	2	3	1	40	50	1	5
24110011531	4	3	3	1	2	2	10	20	3	3
24110011532	1	2	5	5	4	3	40	50	2	5
24110011534	4	5	3	2	4	1	10	50	3	4

25110011004	3	3	2	3	2	3	20	10	4	3
25110011032	A	B	C	D	E	F	G	H	K	L
25110011301	5	2	2	3	5	2	50	50	4	5
25110011302	1	3	2	5	3	4	20	40	5	5
25110011304	4	3	2	3	1	3	50	30	5	3
25110011309	5	2	3	5	4	4	40	40	2	4
25110011312	1	5	4	3	3	5	20	10	2	4
25110011313	5	4	2	5	2	4	30	40	5	3
25110011314	4	2	4	3	4	1	50	10	5	4
25110011317	1	3	3	4	3	3	40	30	4	2
25110011319	5	3	3	2	5	5	40	40	4	2
25110011515	3	2	2	2	5	5	50	30	2	2